



## U.S. BASED SUPPORT

**HOURS: MONDAY - FRIDAY | 8AM - 5PM EST**



**[1.410.840.3555](tel:14108403555)**



**[support@iagoffroad.com](mailto:support@iagoffroad.com)**



**VIDEO INSTRUCTIONS**

**<https://iagoffroad.com/vi/IAG-BDY-F2306>**



**SCAN ME**



**IAG ROCK SHIELD™  
REAR SHOCK TRAILING ARM  
SKID PLATE  
FOR 2021+ BRONCO**



**IAG Rock Shield™**  
**Rear Shock Trailing Arm Skid Plate**  
**For 2021+ Bronco**

**Part Number: IAG-BDY-F2306**

Congratulations on the purchase of your Skid Plate, and thank you for choosing IAG Off-Road!

These instructions are intended for users with basic mechanical skills. Professional installation is not required.

Installation video can be found on our website, or by using the following QR code.

**Tools Needed:**

Socket/Wrench Sizes:

- 10mm, 12mm
- 5mm Allen

Scan or click QR code for instruction video:



Revision Date: 6/11/2026

**Parts Included:**



**Hardware Included:**



### Step 1

Prepare the Right Shock Skid Plate, Outer Bracket, and two 12mm Bolts.

Align the Right Skid Plate to the passenger side rear Shock.

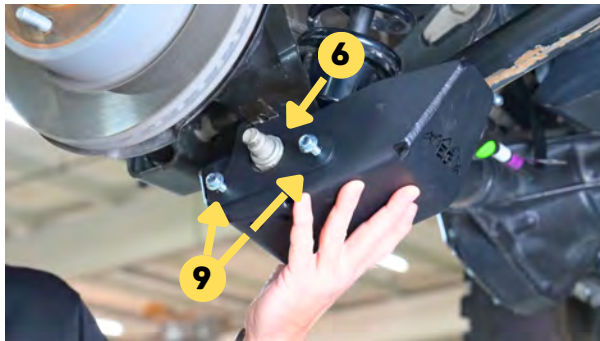


### Step 1 pt. 2

Install the provided Outer Bracket onto the factory tab as shown.

Install the 12mm bolts through the Outer Bracket into the Shock Skid.

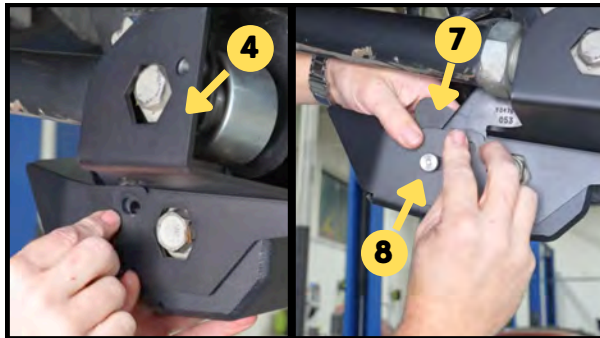
Do not tighten at this time.



### Step 2

Prepare the Right Inner Bracket, Nut Plate, and two 5mm Allen Bolts.

Install the Inner Bracket as shown, and insert the Nut Plate behind Shock Skid. Secure with Allen Bolt.



### Step 3

Align the Threads of the Nut Plate with the Bolt Hole of the Inner Bracket.

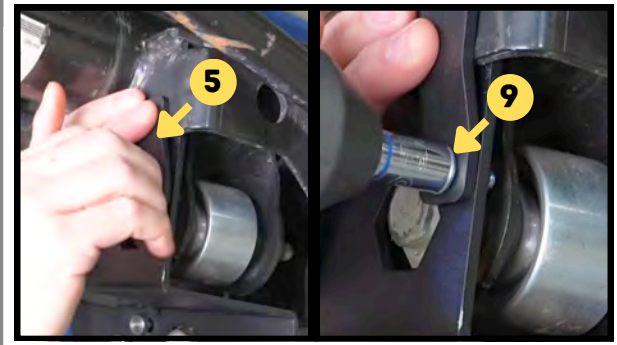
Install the second 5mm Allen Bolt, tighten both bolts evenly until snug.



### Step 4

Prepare the Right Support Tab and 12mm Bolt.

Install the Tab onto the top of the Right Inner Bracket as shown and tighten.



### Step 5

Tighten the 12mm Bolts on the Outer Bracket evenly until snug.



### Step 6

Prepare the Left Shock Skid Plate, Outer Bracket, and two 12mm Bolts.

Align the Left Skid Plate to the driver side rear Shock.



### Step 6 pt. 2

Install the provided Outer Bracket onto the factory tab as shown.

Install the 12mm bolts through the Outer Bracket into the Shock Skid.

Do not tighten at this time.



### Step 7

Locate the Brake Line Bracket near the driver side Trailing Arm Mount.

Using a 10mm socket, remove the factory bolt from the Brake Line Bracket.

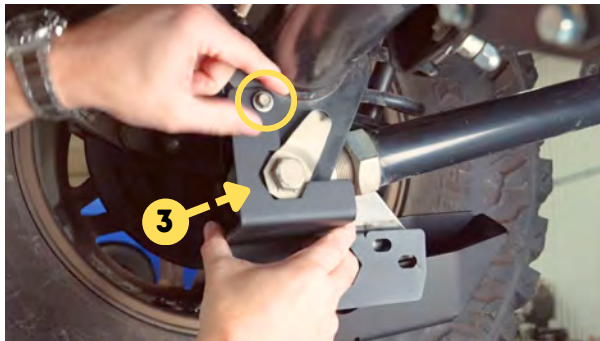


### Step 8

Prepare the Left Inner Bracket, Nut Plate, and two 5mm Allen Bolts.

Install the Inner Bracket as shown, reuse the factory Brake Line Bracket Bolt and secure.

Do not tighten at this time.



### Step 9

Install the Nut Plate and two 5mm Allen Bolts as shown.



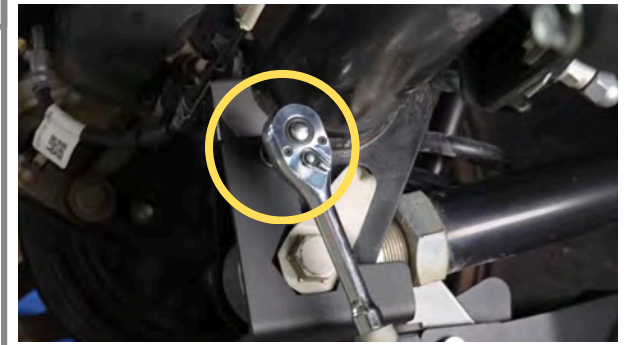
### Step 10

Tighten the 5mm Allen Bolts evenly until snug.



### Step 11

Using a 10mm Socket, tighten the factory Brake Line Bracket Bolt.



### Step 12

Tighten the 12mm Bolts on the Outer Bracket evenly until snug.

Installation Complete!

