

***IAG 4PC Interior LED Dome Light Kit V2 for 2021+
Ford Bronco 2-Door Hardtop and 4-Door Soft Top***





IAG-ACC-F1060 IAG 4PC Interior LED Dome Light Kit for 2021+ Ford Bronco

Congratulations on the purchase of your IAG 4PC LED Dome Light Kit and thank you for choosing IAG Off Road! These instructions are intended for users with basic mechanical skills. Professional installation is not required.

Video instructions can be found here:

<https://www.youtube.com/watch?v=a37mBLvi9nU&t=1s>



Step 1

Disconnect ground terminal from the battery and place a rag between.



Step 1 pt.2



Step 2

Remove corner panels on both driver and passenger sides.





Step 2 pt.2



Step 3

Remove the two 8mm bolts securing the front trim panel and remove the panel.



Step 3 pt.2



Step 4

Remove the three 8mm bolts on the rear trim panel and remove.

Repeat steps 3 and 4 for passenger side.



Step 4 pt.2



Step 4 pt.3

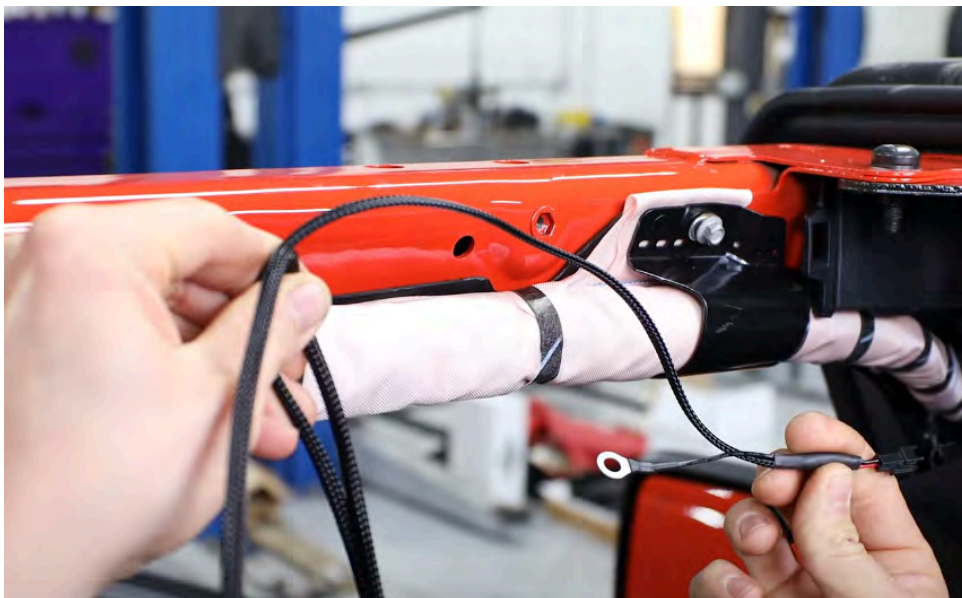


Step 5

Remove driver side A-pillar trim panel by pulling down towards the rear.



Step 5 pt.2

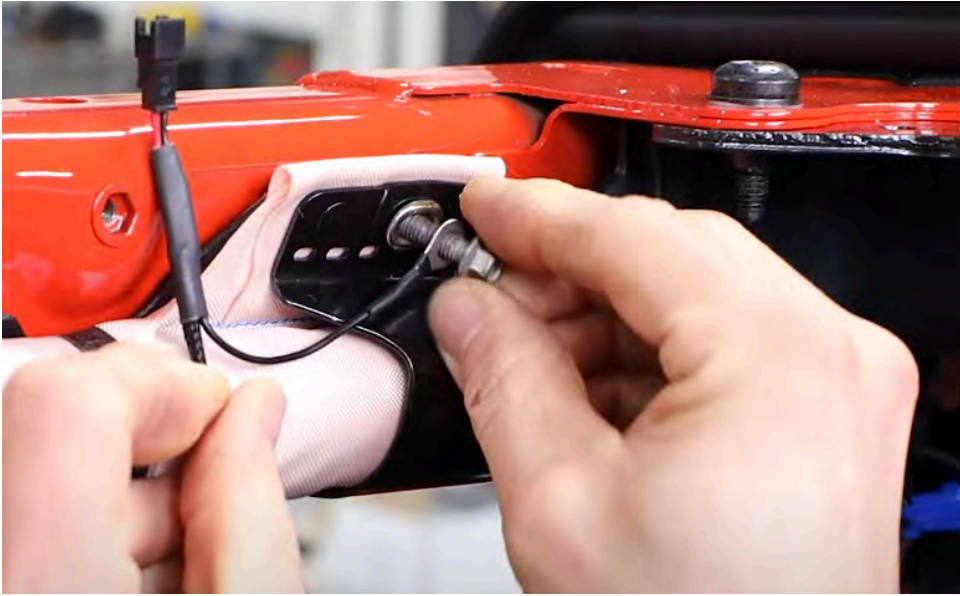


Step 6

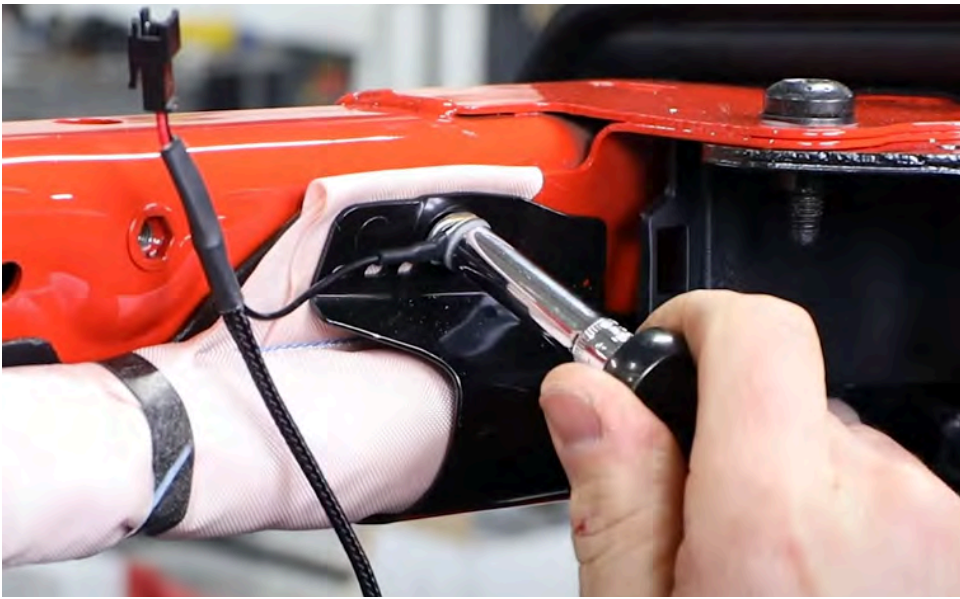
Attach the ground cable to the bolt on the driver side airbag support.



Step 6 pt.2



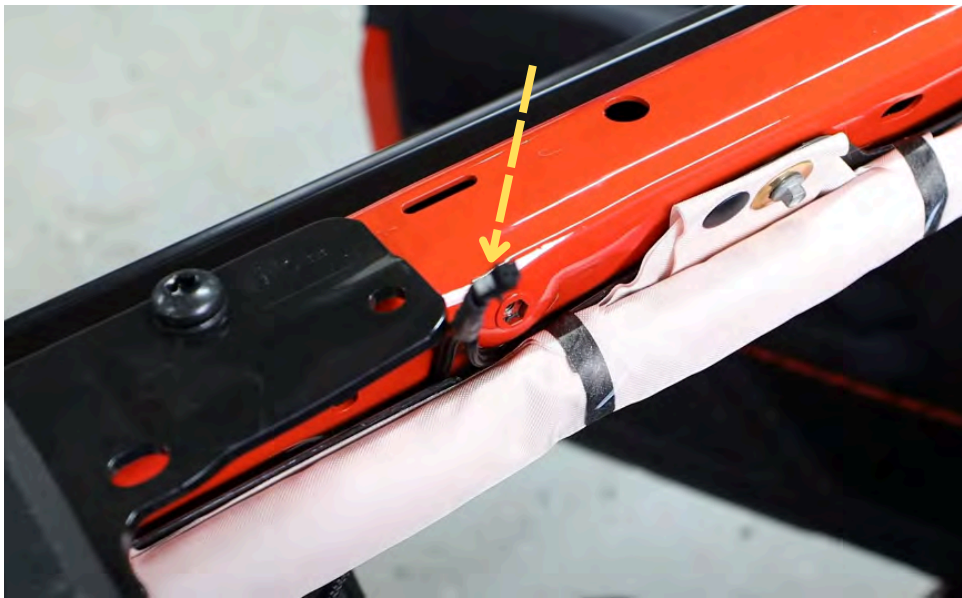
Step 6 pt.3



Step 7

Route the longer side of the harness behind the airbag.





Step 8

Route the light connection up behind the airbag past airbag securing bolt.



Step 9

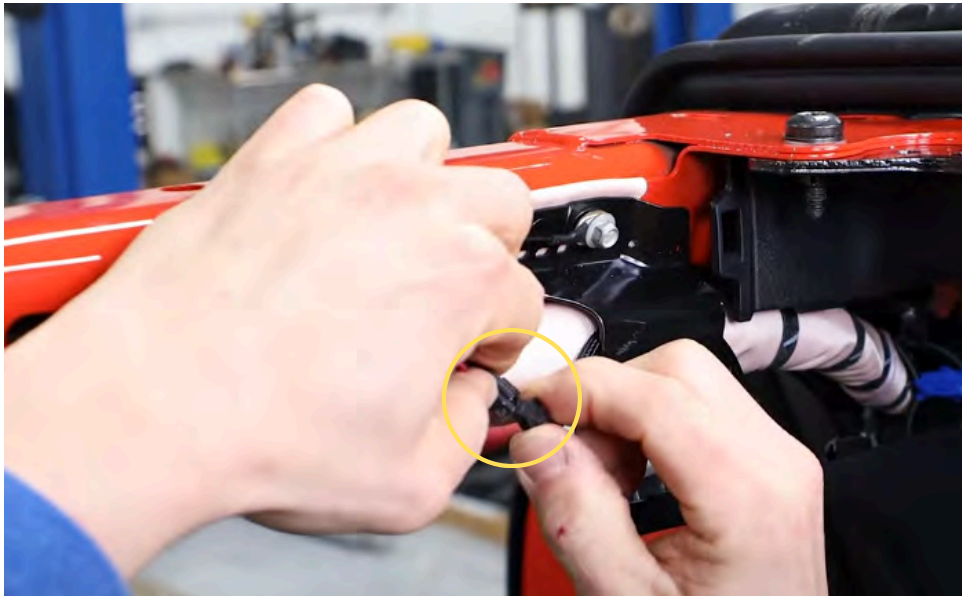
Route the remainder of the harness to the rear and behind the airbag.



Step 10

Route the passenger harness between the metal airbag support bracket.





Step 11

Plug in the two connectors and push connector behind the airbag.



Step 11 pt.2



Step 12

Pull down on the overhead trim panel dome lights slightly.



Step 13

Route the part of the harness with the other two light connectors behind the panel.



Step 13 pt.2



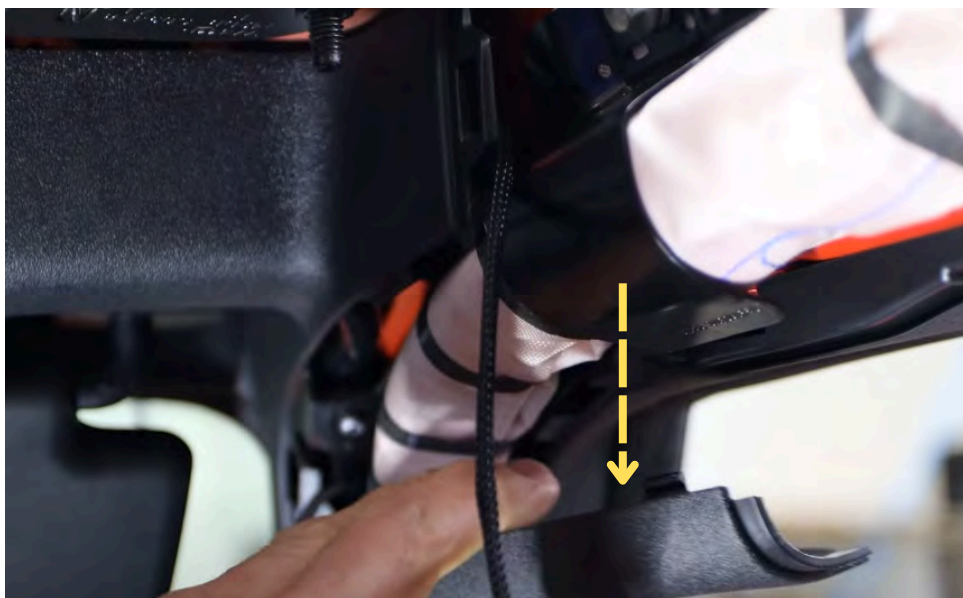
Step 13 pt.3

Step 13 pt.4



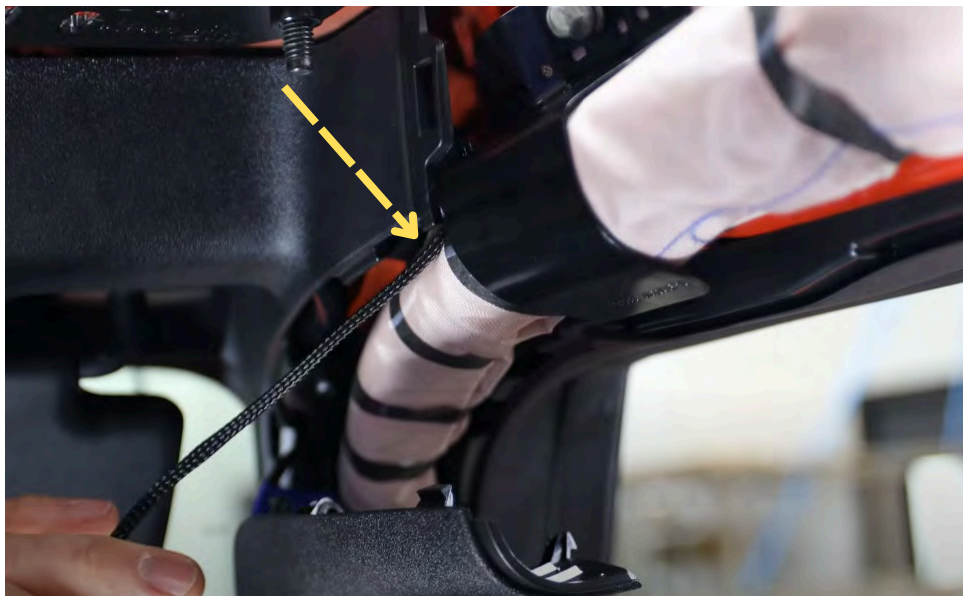
Step 14

Remove passenger side A-pillar trim panel by pulling down towards the rear.



Step 15

Route the wire between the airbag bracket and behind the airbag.





Step 16

Route the harness behind the airbag as done on the driver side.

Reference step 10.

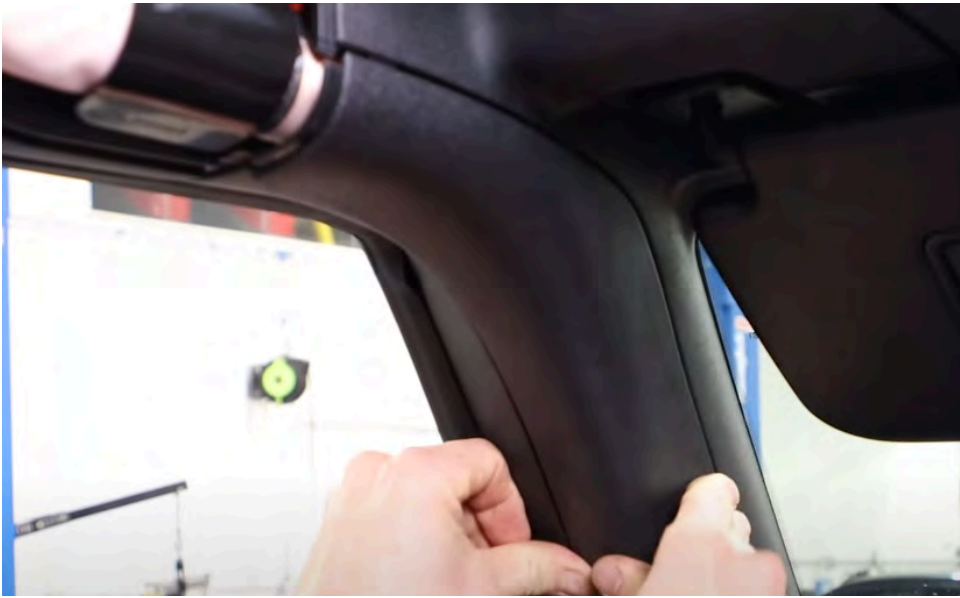


Step 16 pt.2



Step 17

Route light connections up and behind airbag as done on the driver side.



Step 18

Reinstall both of the A-pillar trim panels.



Step 18 pt.2



Step 19

Reinstall the upper trim panel by pushing upwards.



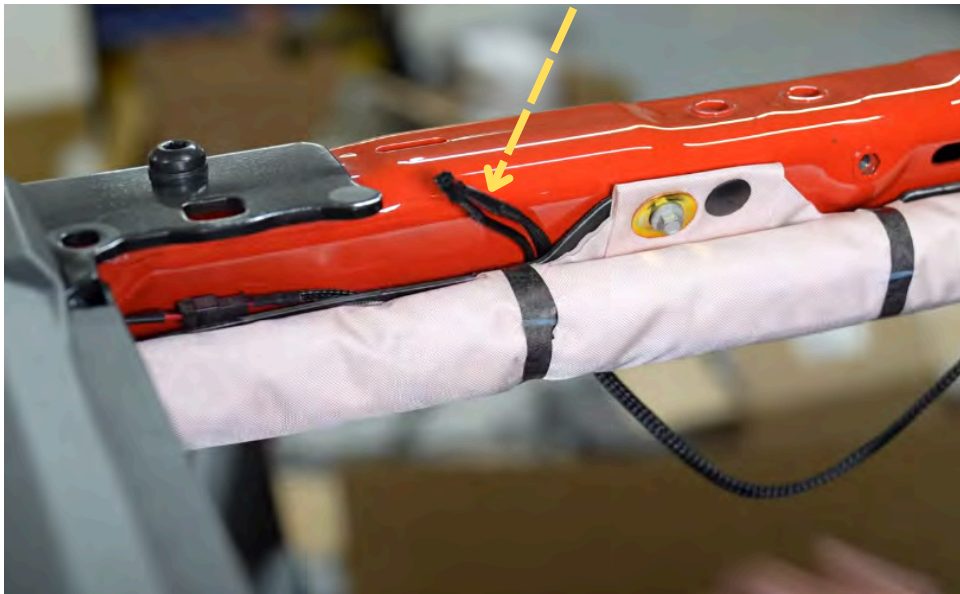
Step 20

On the passenger side route the wire behind the airbag and connect it to the light harness from step 17.

7



Step 20 pt.2



Step 21

Leave the dome light connector above the airbag.



Step 22

Route harness behind the airbag and then up at the back of the airbag.



Step 23

Route wire to the factory dome light behind the trim panel by pulling it.



Step 24

Unclip the factory dome light harness.

Step 24 pt.2



Step 25

Install the light module.



6



Step 25 pt.2



Step 25 pt.3



Step 26

Remove the tape backing.



Step 26 pt.2





Step 27

Mount the module to the roll bar above the factory dome light.



Step 28

Install the module connector to the factory dome light from step 24.



Step 29

Plug in the driver side rear dome light.

2





Step 30

Reinstall the rear trim panel and loosely install one factory bolt to the dome light.



Step 30 pt.2



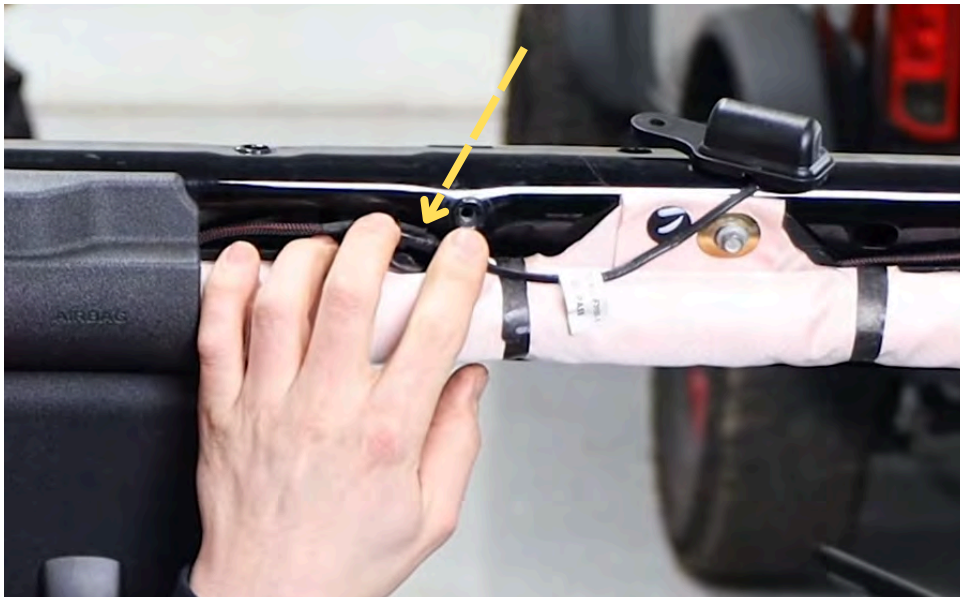
Step 31

Install the remaining trim panel bolts and tighten.



Step 32

Make sure the light is level and tighten the dome light bolt.



Step 33

Plug in the driver side front dome light.

1



Step 34

Ensure the wire stays below the bolt hole when installing front trim panel.



Step 35

Install the front dome light with the factory trim panel bolt.



Step 36

Loosely install the other factory trim panel bolt.



Step 37

Tighten the light bolt along with the trim panel bolt.



Step 38

Reinstall the top trim panel from step 2 by pushing up.



Step 39

Repeat steps 30-40 for the passenger side dome light installation.



Step 40

Reinstall ground terminal to the battery.

Step 41



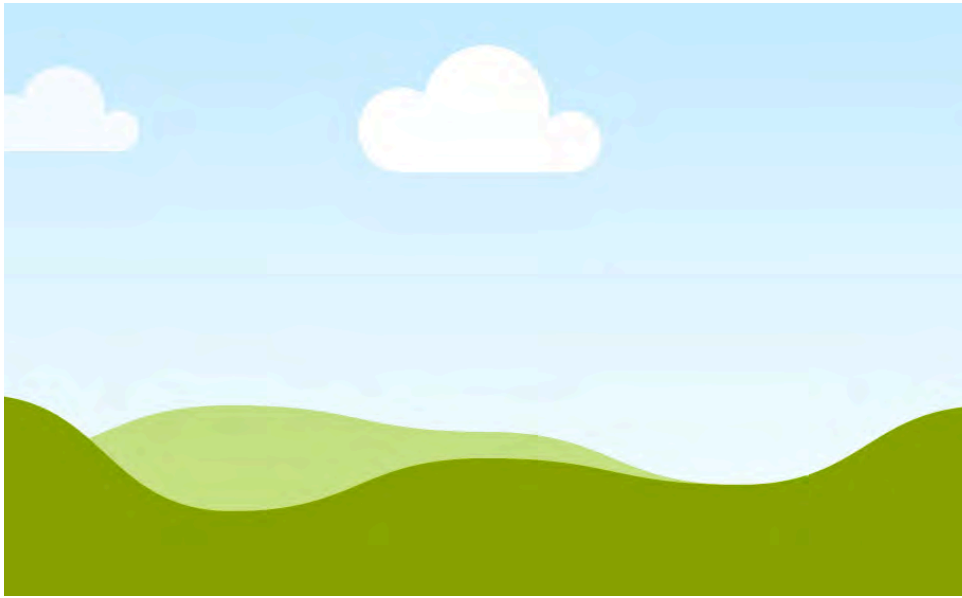
Turn the dome lights on and off three times to program the module.



If you have any questions about the product or install please reach out to support@iagoffroad.com or call 410-840-3555

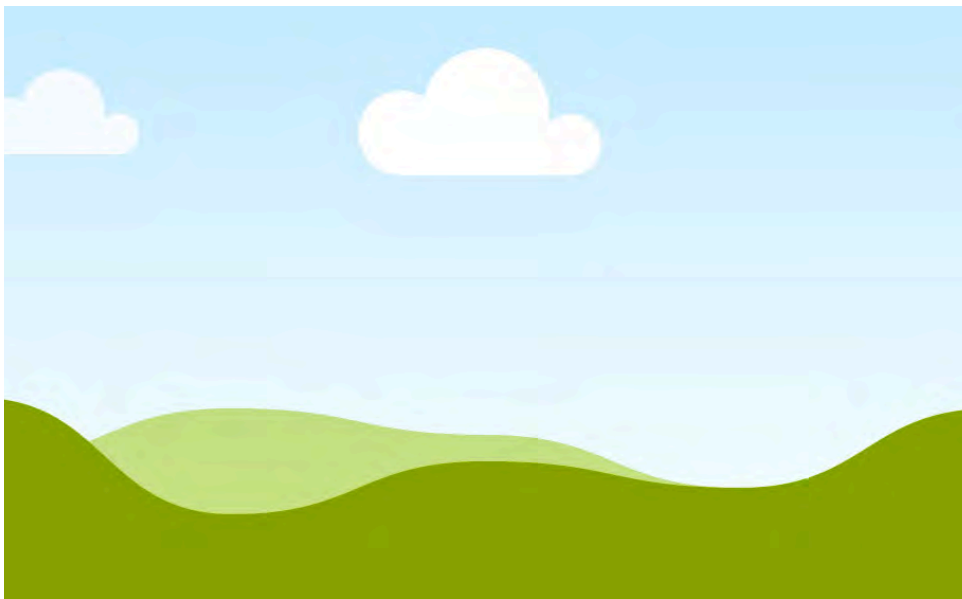
Step 1

Add a little bit of body text



Step 2

Add a little bit of body text



Step 3

Add a little bit of body text

